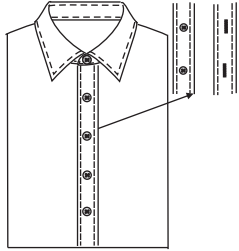


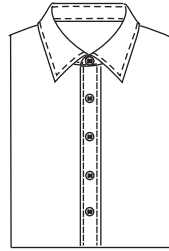
SHIRT

STYLE&DESIGN MANUAL

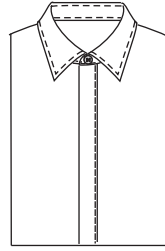
Placket style



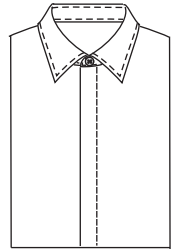
520Q Left & right placket front



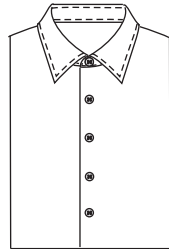
5102 Un-functional placket front



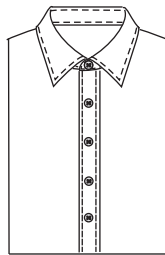
520D Gripping hidden button front



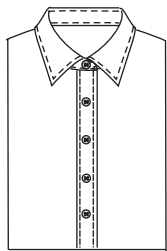
5103 Hidden button front



518B Left & right plain front

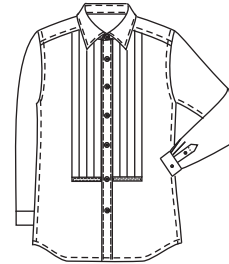


△5101 Placket

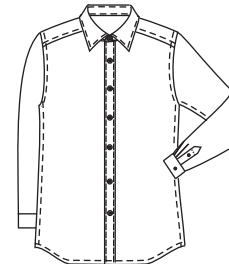


531D Right coverleft

Placket style



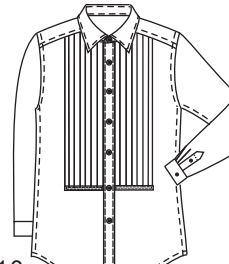
5118 Tuxedo front 4 2.5cm pleat for each side



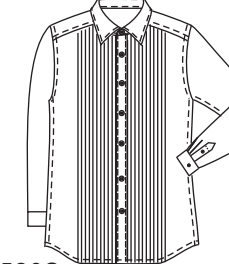
△S-530X Normal



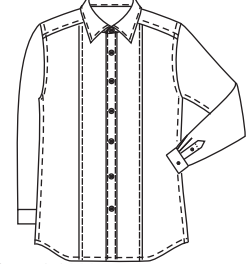
5109 Top five buttons part are plain front ,the rest is hiddenbutton front



5119 Two placket front w/pleated patch (seven 1.3cm width pleats each side)

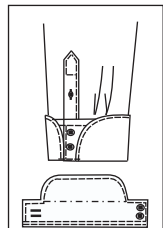


S-520S Tuxedo front. Ten 0.7cm pleat on each side to bottom

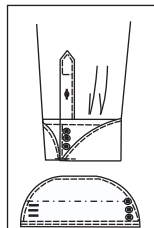


S-530W Single pleat on each side

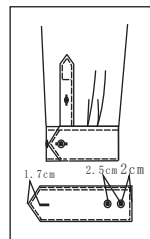
Cuff style



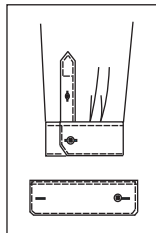
545C
Single semicircle French cuff two buttons & two buttonholes



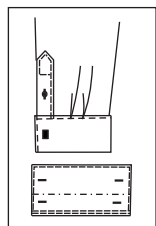
546Z
Semicircle French cuff three buttons & three buttonholes



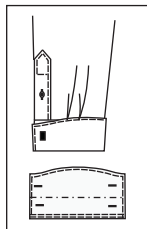
S-5441
Pointed cuff one button & one buttonhole



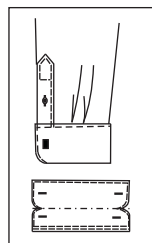
S-540B
Hexagon cuff one button & two buttonholes



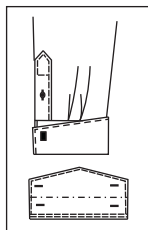
5455
Square French cuff four buttons & four buttonholes



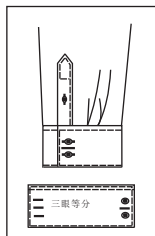
5456
Large arc French cuff four buttons & four buttonholes



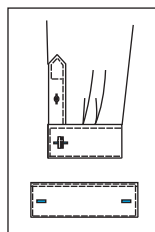
5457
French cuff with tab five buttons & five buttonholes top stitch 0.3cm



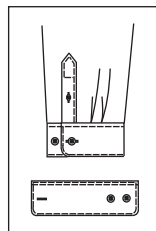
5454
Triangle French cuff four buttons & four buttonholes



S-545N
Square cuff with four buttonholes & two buttons

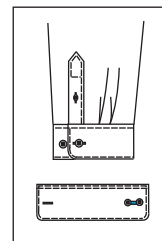


S-5406
Single square French cuff two buttons & two buttonholes

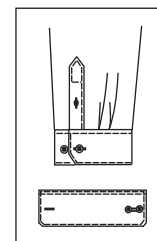


S-5411
Rounded cuff two buttons & one buttonhole

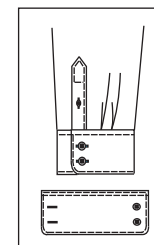
Cuff style



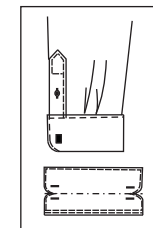
5783
Rounded cuff with two buttons & buttonhole, two buttons on inner sleeve placket



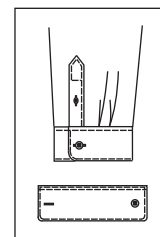
5786
Hexagon cuff with two buttons & buttonhole, two buttons on inner sleeve placket



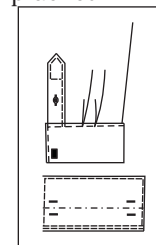
S-5412
Rounded cuff with two buttons & buttonhole



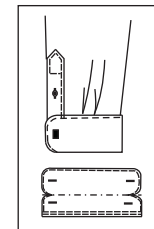
5578
French cuff with 2 layers, 4 buttons & 4 buttonholes on the 1/3 position after folded



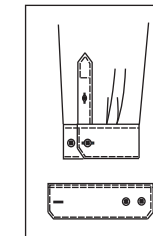
S-5414
Small rounded cuff one button & one buttonhole



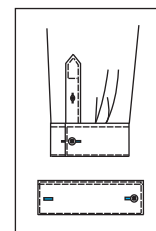
545D
Square French cuff four buttonholes, buttonhole is on 1/3 part of the cuffs



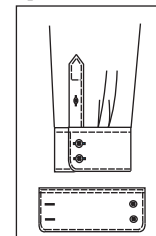
545T
Rounded French cuff



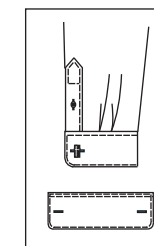
S-5431
Hexagon cuff two buttons & one buttonhole



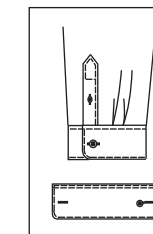
S-5404
Square cuff one button & two buttonholes



S-5415
Small rounded cuff two buttons & two buttonholes

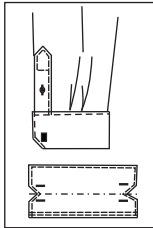


S-5409
Single rounded French cuff two buttons & two buttonholes

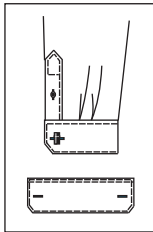


S-545M
Rounded cuff one button & two buttonholes with button inside cuff

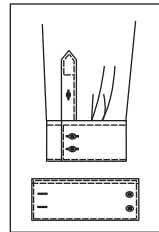
Cuff style



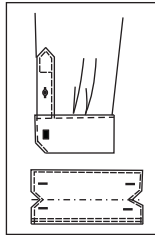
58A0
Double hexagon french cuff with 4 buttonholes on 1/3 position after folded



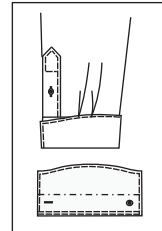
S-5408
Single square french cuff two buttonholes



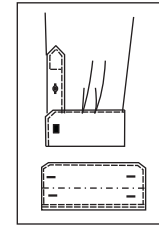
S-5402
Square cuff two buttons & two buttonholes



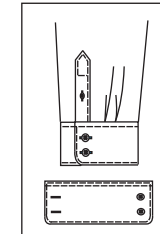
5459
Double hexagon french cuff with 4 buttonholes



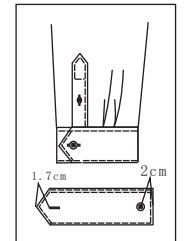
5426
French arch cuff one button & one buttonhole



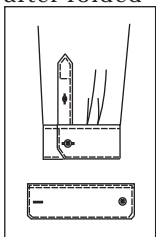
5452
Hexagon french cuff four buttonholes



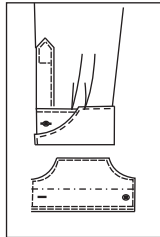
S-5422
Large rounded cuff two buttons & two buttonholes



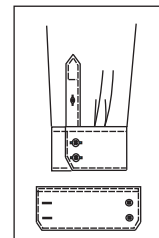
S-5440
Pointed cuff two buttons & one buttonhole



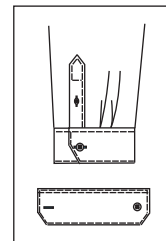
S-5430
Hexagon cuff one button & one buttonhole



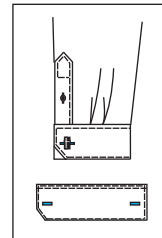
53A1
Arc shaped french cuff with 1 button & buttonhole



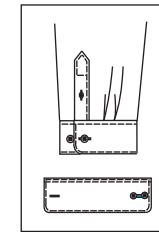
S-5432
Hexagon cuff two buttons & two buttonholes



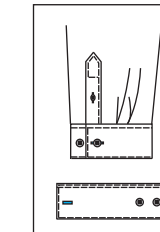
S-5434
Large hexagon cuff one button & buttonhole



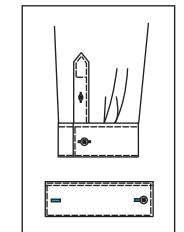
S-5427
French triangle cutout cuff



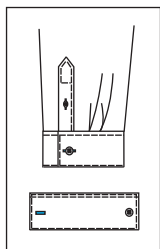
5785
Large rounded cuff w/ two buttons & two buttonholes on the side of buttonhole of the smaller sleeve placket



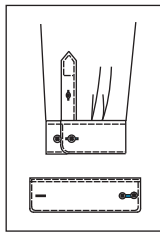
S-5401
Square cuff two buttons & one buttonhole



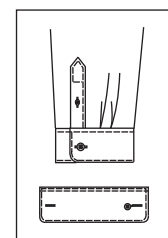
S-5429
Convertible square cuff



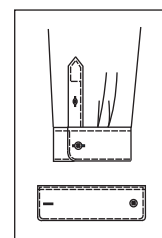
S-5400
Square cuff one button & one buttonhole



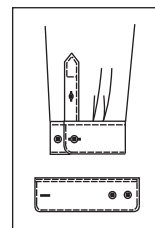
5784
Small rounded cuff w/ two buttons & two buttonholes, two buttons on the side of buttonhole of the smaller sleeve placket



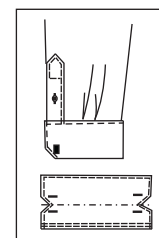
S-54B6
Rounded cuff with two buttons and one button,



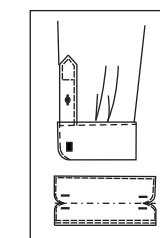
S-5420
Large rounded cuff one button & one buttonhole



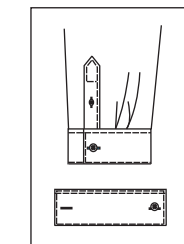
S-5411
Rounded cuff two buttons & one buttonhole



545E
French cuff double hexagon four buttonholes

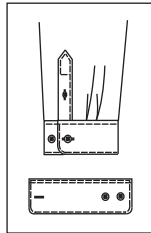


545F
French cuff double round four buttonholes

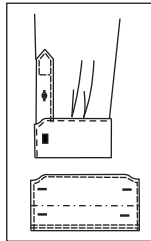


S-5405
Square cuff one button & two buttonholes

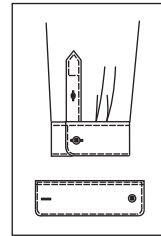
Cuff style



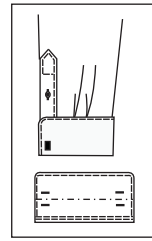
S-5421
Large rounded
cuff two buttons
& one buttonhole



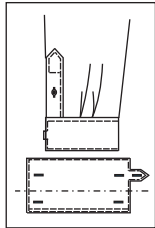
5458
Small arc French
cuff four
buttonholes



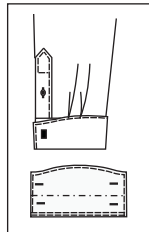
△S-5410
Rounded cuff one
button & one but
tonhole



545G
Rounded French
cuff four but
tonholes, buttonhole
is on 1/3 part of
the cuffs

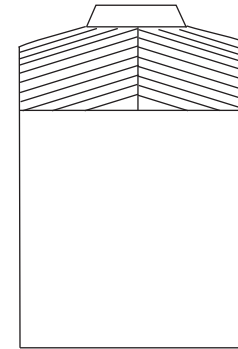


S-545A
French cuff with
tab five but
tonholes

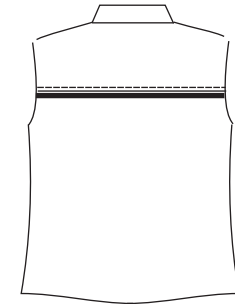


5407
Single semicircle
French cuff four
buttonholes

Yoke style

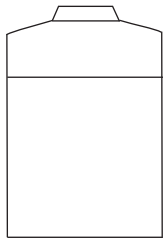


S-5171
Split yoke

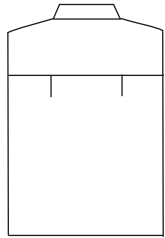


S-5147
Plain back w/0.3cm contrast
strip on yolk (0.15cm top
stitch)

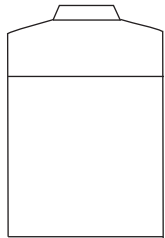
Back style



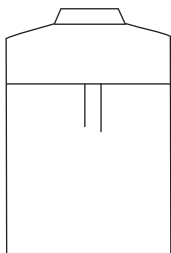
S-5140
No pleat and
no dart



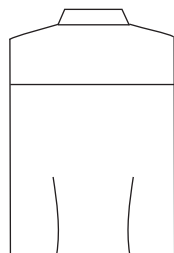
△S-5141
Side pleats



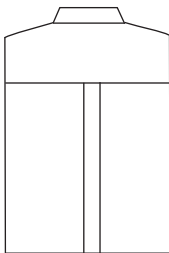
S-5170
Normal yoke



S-5143
Box pleats

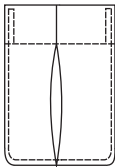


S-5144
No pleat with
double darts

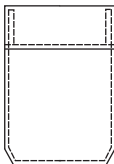


S-5145
Box pleats to
bottom

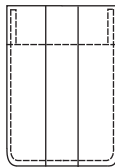
Pocket style



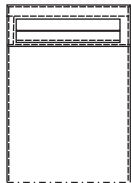
5326
Rounded pocket
Inverted box
pleat



S-5311
Hexagon pocket
with ornamental
edgefold

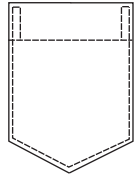


S-5329
Rounded pocket
with box pleat

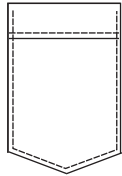


S-5321
Square hidden pocket
with double besom

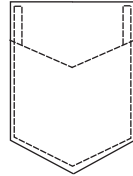
Pocket style



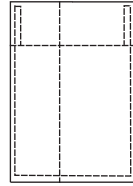
S-5300
Triangle pocket
with straight
edgefold



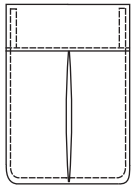
5301
Triangle pocket
with ornamental
edgefold



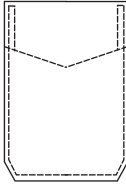
S-5302
Triangle pocket
with triangle
edgefold



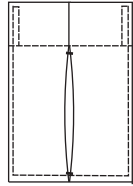
S-536G
Square pocket
with pen pocket



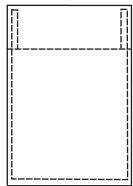
S-5316
Gripping round pocket
with Inverted Center
Box Pleat



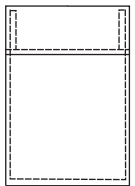
S-5310
Hexagon pocket
with triangle
edgefold



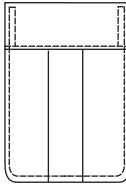
S-536F
Square pocket I
nverted box pleat



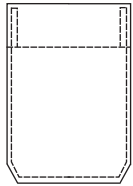
S-5340
Square pocket with
straight edgefold



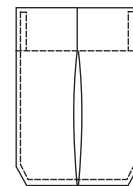
S-5344
Hexagon pocket
with straight
edgefold and
box pleat



S-5315
Rounded hem pocket
with box pleat

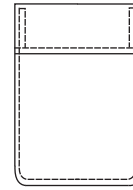


S-5312
Hexagon pocket with
straight edgefold

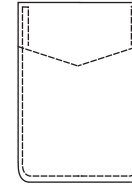


S-536A
Hexagon pocket
Inverted Pleat

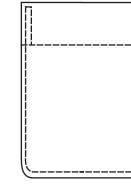
Pocket style



5324
Round pocket
with ornamental
edgefold

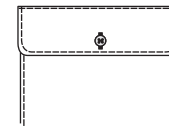


S-5325
Round pocket with
triangle edgefold

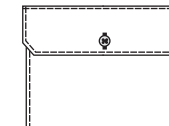


S-5323
Round pocket with
straight edgefold

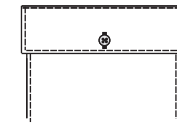
Flap option



5374
Round flap with
one button

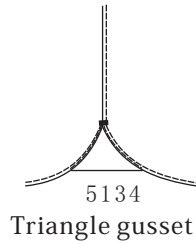
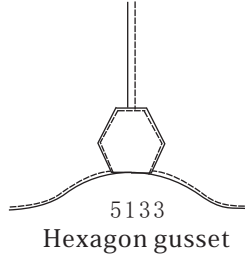
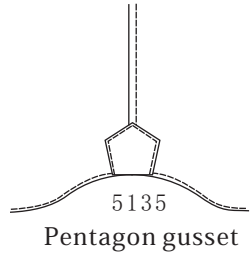


5372
Hexagonal flap
with one button

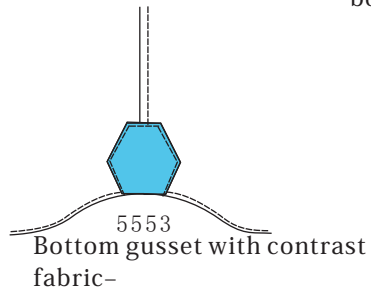
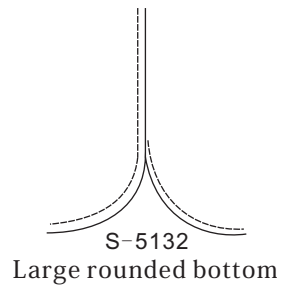
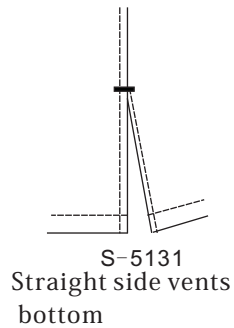
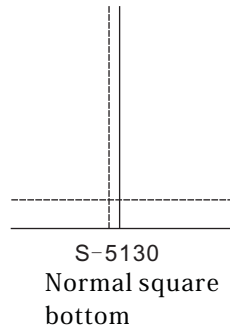
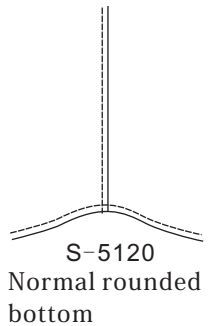


5376
Square flap with
one button

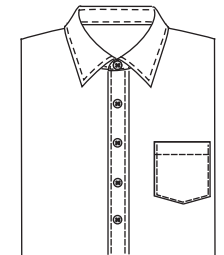
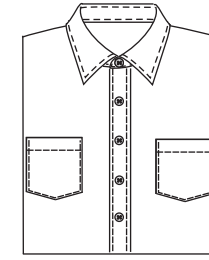
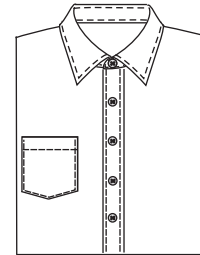
Gusset



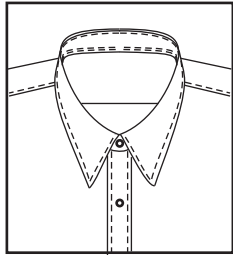
Bottom style



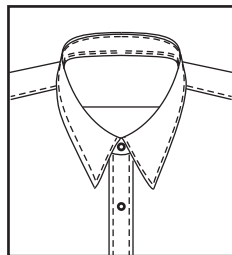
Pocket quantity



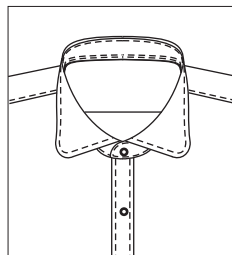
Collar style



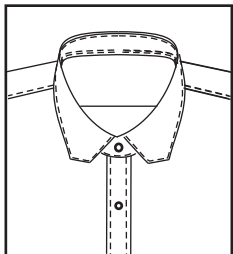
5L29
Peak collar D



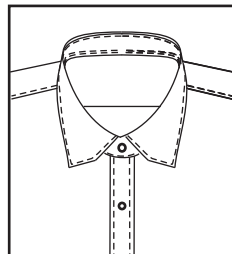
5L30
Peak collar E



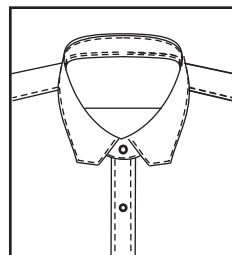
5L46
Round collar G



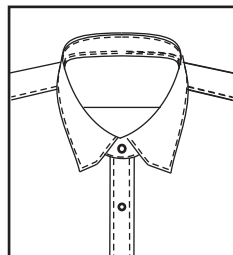
5L48
E style



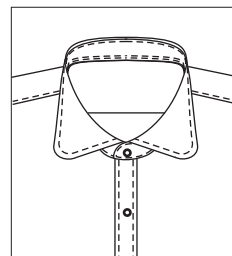
5L50
Hexagon E



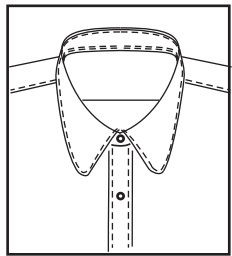
5L47
C style



5L49
Hexagon C

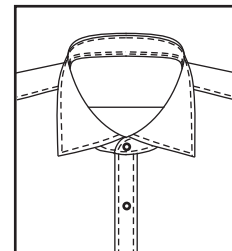


5L45
Round collar F

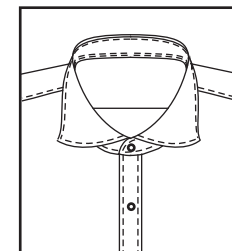


5L44
Round collar C

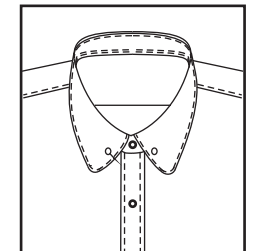
Collar style



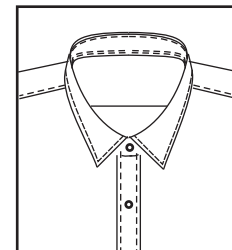
5L34
Cut away collar H



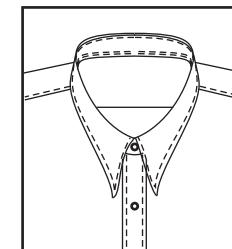
5588
Cut away arch
collar



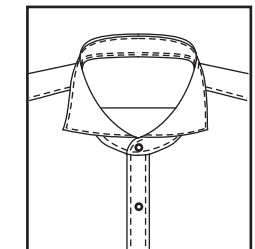
5L04
Small round collar
with eyelet



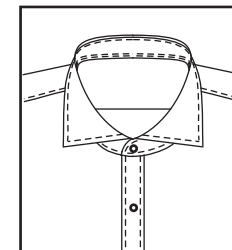
5K03
Small squared
collar



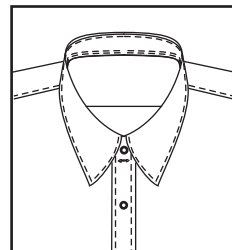
5L26
Peak collar A



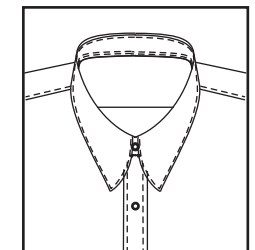
5L38
Cut away collar N



5L36
Cut away collar L

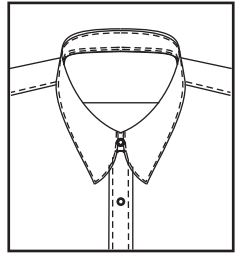


5L42
Arch collar G

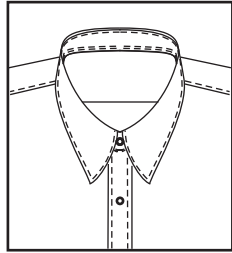


5L39 Arch collar B

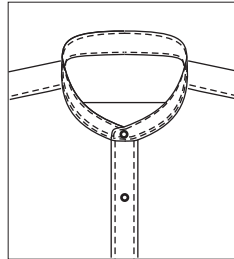
Collar style



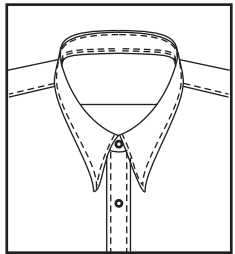
5L40 Arch collar C



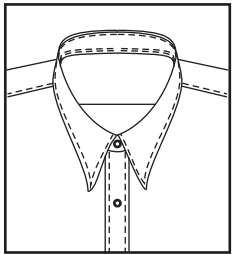
5L41 Arch collar E



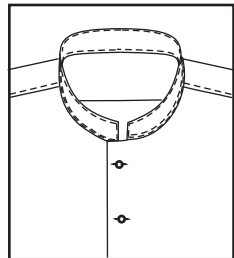
S-5250
Band collar (#56)



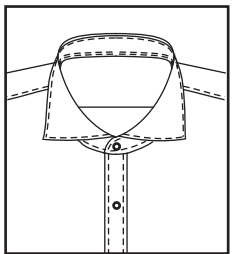
5L27
Appointed collar B



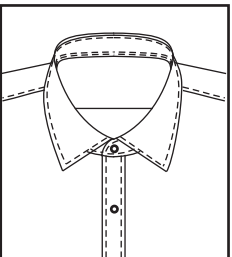
5L28
Appointed collar C



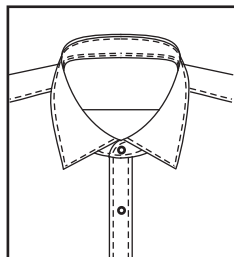
5L51
Band collar 1



5L37
Cut away collar M

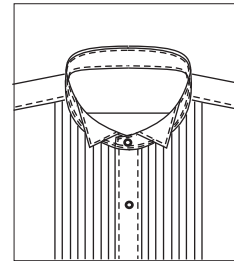


5L31
Square collar F

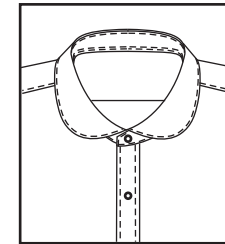


5L32
Square collar G

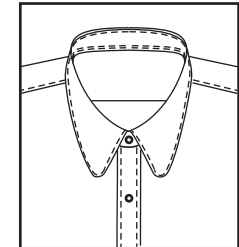
Collar style



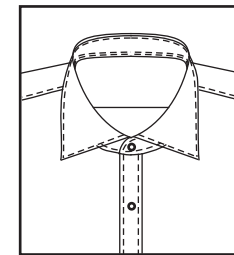
S-5260
95# Tuxedo collar



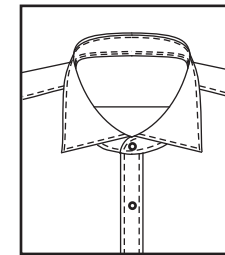
5L80
Rounded collar A



5L43
Round collar B

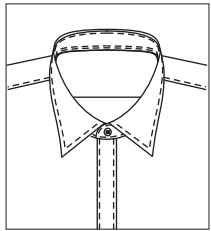


5L33
Cut away collar H

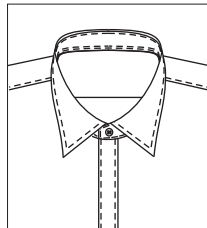


5L35
Cut away collar K

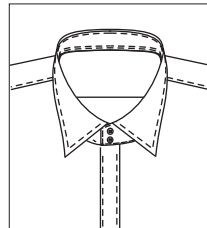
Collar band



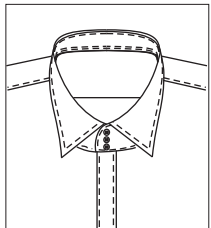
△S-5270
Rounded collar band
w/one button



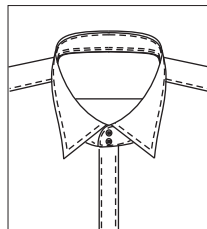
S-5274
Squared collar band
w/one button



S-5275
Squared collar band
w/two button

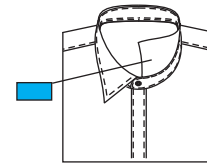


S-5273
Rounded collar band
w/three button

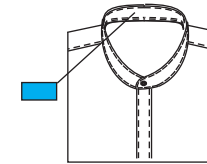


S-5271
Rounded collar band
w/two button

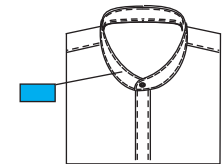
Collar cuff color matching



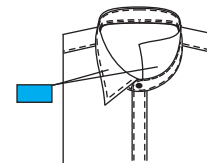
S-5532
Under collar leaf
contrast fabric-



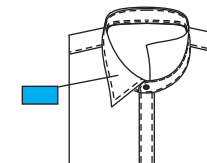
Inner collar
band contrast
fabric for
stand collar-



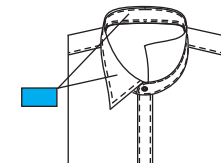
Outside of collar
band contrast
fabric for stand
collar-



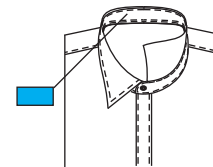
S-5551
Top collar
contrast
fabric-



S-5552
Outside of collar
leaf contrast
fabric-

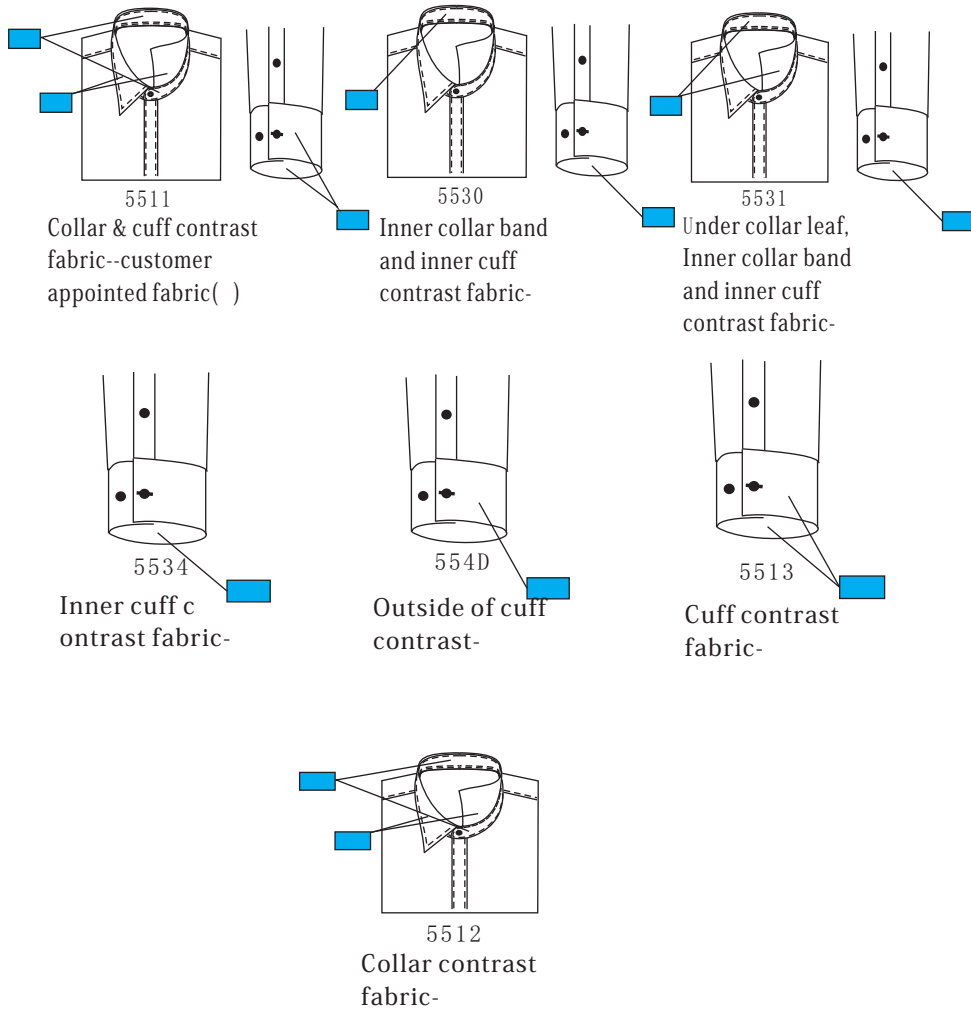


S-5518
Outside of whole
collar contrast
fabric-

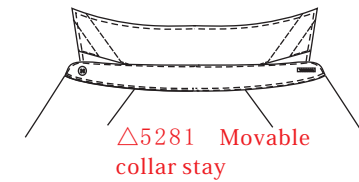
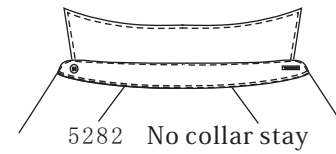


S-5533
Inner collar
band contrast
fabric-

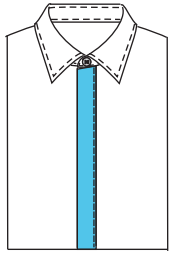
Collar cuff color matching



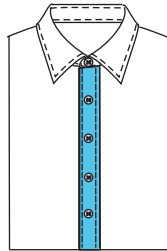
Collar stay



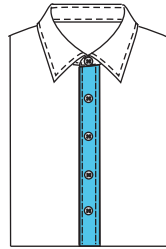
Front placket color matching



5536
Hidden placket
inner and top
front contrast

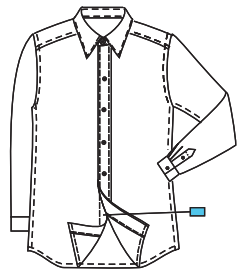


5537
Outside of
placket-



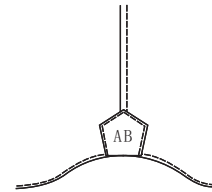
5633
Left placket top

Front placket color matching

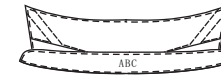


5542
Right placket top

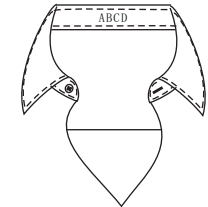
Monogram position



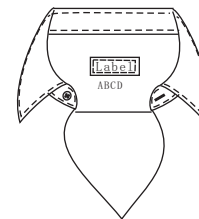
Left gusset
Right gusset



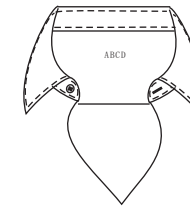
Band of under
collar



Center of collar
band



Inside yoke,
1 cm under label



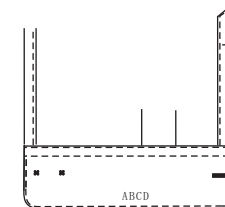
Top of inside
yoke



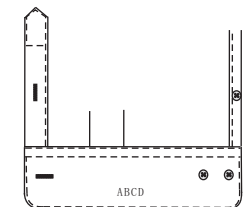
Right chest (second
button level)



Left chest (second
button level)



Mono on middle of
left cuff



Mono on middle of
right cuff

Placket buttonhole style



5600

All vertical buttonholes



5581

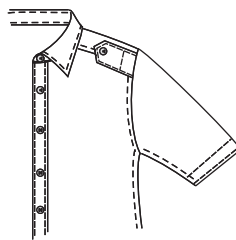
Horizontal buttonhole on front placket



530V

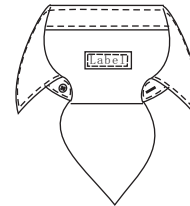
Hidden front with last buttonhole sewing through

Shoulder epaulet



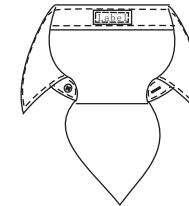
5172 Epaulet

Brand label position



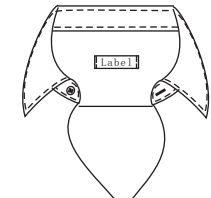
57D7

Inside yoke



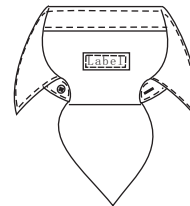
57D8

Brand label on collar band



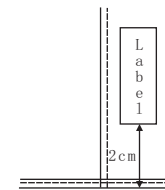
57D2

Brand labels 2 sides sewing



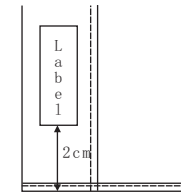
57D1

Brand labels 4 sides sewing



59A5

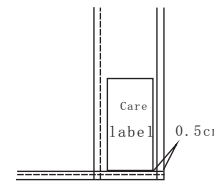
Brand label on the reverse side of the bottom of left placket



59A6

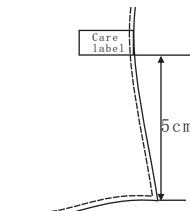
Brand label on the reverse side of the bottom of right placket

Care label position



57P2

Care label left bottom placket



△57P3
Care label in side seam-

Customer appointed thread

5622 Appointed shirt buttoning thread-

Appointed Button

57N7 Button choice

Monogram font

<i>ABCDEFGHIJKLMN OPQRSTUVWXYZ</i>	RC01
ABCDEFGHIJKLMN OPQRSTUVWXYZ	RC02
ABCDEFGHIJKLMN OPQRSTUVWXYZ	RC03
<i>ABCDEFGHIJKLMN OPQRSTUVWXYZ</i>	RC04
<i>ABCDEFGHIJKLMN OPQRSTUVWXYZ</i>	RC05
ABCDEFGHIJKLMN OPQRSTUVWXYZ	RC06
<i>ABCDEFGHIJKLMN OPQRSTUVWXYZ</i>	RC07
ABCDEFGHIJKLMN OPQRSTUVWXYZ	RC08
<i>ABCDEFGHIJKLMN OPQRSTUVWXYZ</i>	RC09

Buttoning style



△57B1
= sewing button



57B2
= Sewing button



5K11
Claw sewing
buttons(hand)